

Msd

MotorsportDays  LIVE[®]

THE
SILVERSTONE
WING CONFERENCE
& EXHIBITION
CENTRE

20-21 NOVEMBER

2020

FREE
ENTRY FOR
DRIVERS, TEAMS
& THE TRADE

TWO DAY ENTRY, ACCESS TO THE LIVE
PADDOCK, GARAGES, EXHIBITION
& CONFERENCE WORKSHOPS



#GETTING YOU ON TRACK

EUROPE'S ONLY, ON-TRACK, MOTORSPORT TRADE EXHIBITION RETURNS TO SILVERSTONE 20-21 NOV 2020

INCLUDING: ON TRACK ACTIVITY // TRADE EXHIBITION // TEST DRIVES & EXPERIENCES // LIVE RACING ENVIRONMENT
NETWORKING OPPORTUNITIES // PRODUCT, MANUFACTURER & CHAMPIONSHIP LAUNCHES // GUEST SPEAKERS
EDUCATIONAL WORKSHOPS // LIVE BROADCAST // PLUS MUCH MORE // **FREE ENTRY & FREE PARKING**



WWW.MOTORSPORTDAYS.LIVE | TEL: +44(0)1732 642755 | EMAIL: BEN@MOTORSPORTDAYS.COM

EVENT PARTNERS



SUPPORTED BY



2020 EVENT FLOORPLAN
PRODUCED BY **BWR MEDIA**

SUPPORTING:
TEAM BRIT





THE MOTORSPORT **ENGINEERING** **+TECHNOLOGY** SHOW

SILVERSTONE WING | 20-21 NOVEMBER 2020



SILVERSTONE WING | 20-21 NOVEMBER 2020

THE MOTORSPORT ENGINEERING & TECHNOLOGY SHOW, EUROPE'S ONLY ANNUAL ON-TRACK TRADE EXHIBITION, RETURNS TO SILVERSTONE 20-21 NOVEMBER 2020. DESIGNED EXCLUSIVELY FOR YOU, THIS EVENT PROVIDES THE PERFECT PLATFORM TO MEET, NETWORK AND SOURCE FROM AN ARRAY OF DIVERSE EXHIBITORS SHOWCASING THEIR ENGINEERING ADVANCEMENTS AND LATEST TECHNOLOGY. USE THIS UNIQUE OPPORTUNITY TO MEET WITH RACE TEAMS, CHAMPIONSHIPS AND MANUFACTURERS WHILST ACTUALLY SAMPLING CARS AND PRODUCTS 'LIVE' ON SILVERSTONE'S FAMED INTERNATIONAL CIRCUIT.

JOIN THE
CONVERSATION
#MSDEngineering
#MSDEngineering2020



FREE ENTRY FOR DRIVERS, TEAMS & THE TRADE | WWW.MOTORSPORTDAYS.LIVE

#GETTING YOU ON TRACK

EVENT PARTNERS



SUPPORTED BY



2020 EVENT FLOORPLAN
PRODUCED BY **BWR MEDIA**

SUPPORTING:
TEAM BRIT



REASONS WHY

The various motorsport events on offer throughout Europe dilute their focus between trade and fan visitors, resulting in a mixed message for attendees. MotorsportDays LIVE and the Motorsport Engineering+Technology Show changes this by focusing on industry professionals, drivers competing at every level in every discipline, track day users and the performance car buyer. This enables exhibitors and teams to access a highly-engaged audience.



PERFECT TIMING

Positioned at the end of the racing season, MsD LIVE provides the perfect platform to meet and network whilst utilising the thinking and buying period to enhance business opportunities ahead of the winter testing months.



CENTRAL LOCATION

Conveniently located at Silverstone Circuit at the heart of Motorsport Valley, MsD LIVE is accessible to over 40,000 industry employees based in the area and within easy reach of Birmingham, London, Europe and beyond.



FREE REGISTRATION

FREE entry for drivers, teams and the trade. Plus entrance from the new Hilton Hotel footbridge will allow for easy access to the exhibition, Silverstone Wing and International Circuit, pitlane and paddock.

LOOKING TO EXHIBIT?

MotorsportDays LIVE and the Motorsport Engineering+Technology Show offers a range of spaces suitable for small and large suppliers alike, condensed into a two-day event for a quicker turnaround.

Affordable rates from just £1,695 include extras usually hidden by other exhibitions. All our space and private garage rates include electricity, exhibitor parking and passes to the event.

To benefit from a prime location at the home of British motorsport and the heart of Motorsport Valley, focusing on a trade-only audience, **book your stand by e-mail: ben@motorsportdays.com**



FREE ENTRY & PARKING FOR DRIVERS, TEAMS & THE TRADE

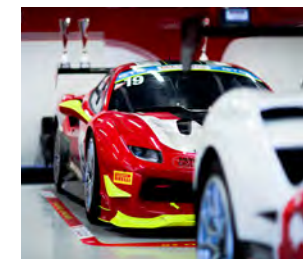
TWO DAY ENTRY, ACCESS TO THE LIVE PADDOCK, GARAGES, EXHIBITION & CONFERENCE WORKSHOPS

VISITOR KEY FACTS

Attracting over 4,000 industry professionals - including those involved in technical and engineering businesses, marketing and media companies, plus race organisers and trackside staff, as well as amateur and professional drivers competing in motorsport at every level.

By eliminating the fan element, this event focuses solely on a highly-engaged audience with those visitors attending having ultimate spending power at a pivotal point in the year. A period when buyers, engineers, drivers and co-ordinators are all looking ahead to plan for the upcoming season. Genuine track day users, those new to the sport and performance car buyers have the rare opportunity to experience products live on track in a racing environment.

With a strong focus on engineering and thanks to the location of the event, empowered decision-makers will be utilising MotorsportDays LIVE (MsD LIVE) for education as well as looking for the latest technology and best-practice ideas within this rapidly-developing industry.



OVER 250 different track vehicles, race cars and manufacturers will take to the International Circuit over the two-days

OVER 1,500 drivers will sign on and get briefed to go out and sample products on track at Silverstone

OVER 4,000 trade visitors, including industry pros, team principles, championship co-ordinators, engine builders and race competitors

92% of tickets holders in 2019 were actively involved within motorsport or employed in the industry

OVER 200 diverse exhibitors ranging from race products and parts to championship organisers and teams

60% of Motorsport UK licence holders come from the track day market

£150,000 The salary 75% of our attendees earn per annum

£70k is the average amount our visitors spend each year within motorsport

MOTORSPORT WITHIN THE UK:

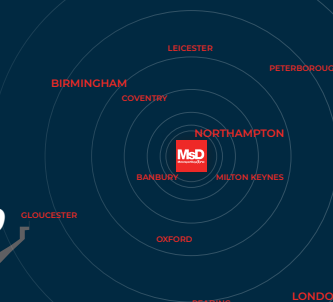
£10 BILLION INTO UK ECONOMY

£2.7 BILLION RE-INVESTED IN R&D

4,300 COMPANIES IN THE INDUSTRY

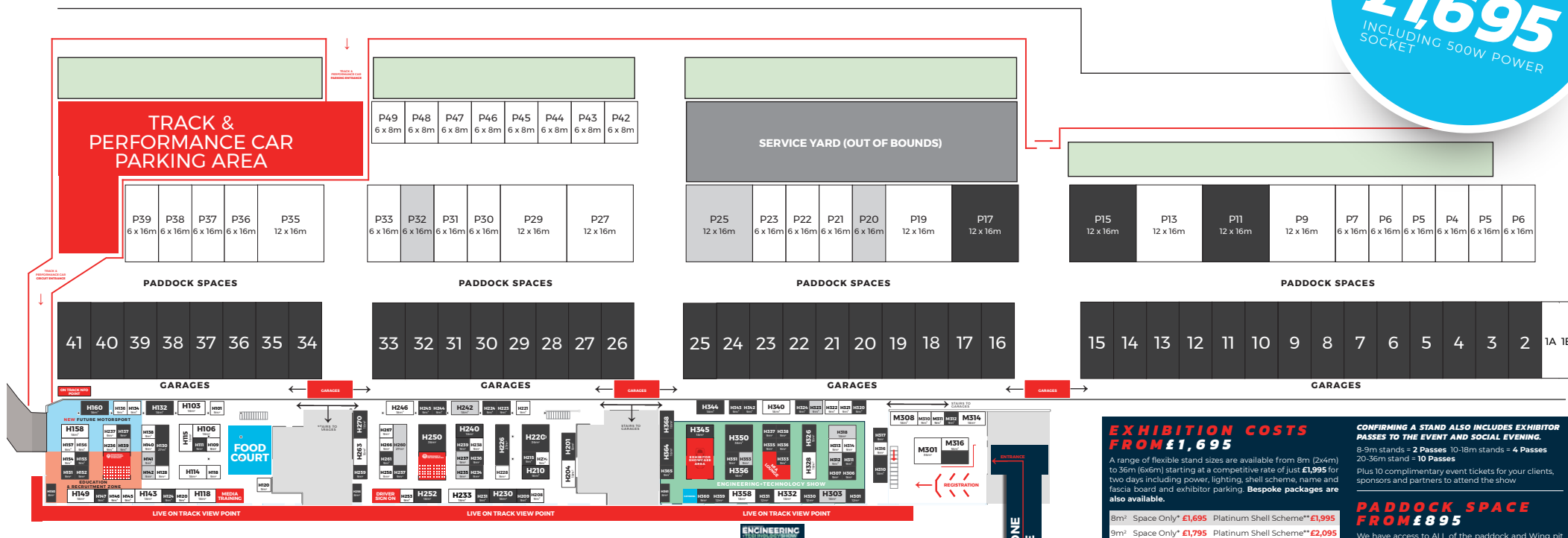
41,000 EMPLOYEES IN THE SECTOR

8 FORMULA 1 TEAMS IN AREA



2020 EVENT FLOOR PLAN

EXHIBITION STANDS START FROM JUST
£1,695
 INCLUDING 500W POWER SOCKET



EXHIBITION COSTS FROM £1,695

A range of flexible stand sizes are available from 8m (2x4m) to 36m (6x6m) starting at a competitive rate of just **£1,695** for two days including power, lighting, shell scheme, name and fascia board and exhibitor parking. Bespoke packages are also available.

8m ² Space Only*	£1,695	Platinum Shell Scheme**	£1,995
9m ² Space Only*	£1,795	Platinum Shell Scheme**	£2,095
12m ² Space Only*	£2,295	Platinum Shell Scheme**	£2,795
18m ² Space Only*	£3,195	Platinum Shell Scheme**	£3,995
27m ² Space Only*	£4,495	Platinum Shell Scheme**	£5,695
36m ² Space Only*	£5,695	Platinum Shell Scheme**	£7,295
54m ² Space Only*	£8,195	Platinum Shell Scheme**	£9,995

INCLUDED IN THE PRICE
 *Space Only includes:
 500w power socket and exhibitor parking.
 **Platinum Shell Scheme includes:
 Premium Shell Scheme, 2 spot lights, 500w power socket, name and fascia board and exhibitor parking.

PLEASE NOTE: ANY THIRD PARTY PRODUCT OR RETAIL DISPLAY(S) WITHIN THE GARAGES OR PADDOCK AREA WILL INCUR AN ADDITIONAL CHARGE TO EXHIBIT. ALTERNATIVELY, SPACE IS ALLOCATED ON THE EXHIBITION FLOOR FOR THESE COMPANIES TO SHOWCASE THEIR PRODUCTS.

CONFIRMING A STAND ALSO INCLUDES EXHIBITOR PASSES TO THE EVENT AND SOCIAL EVENING.

8-9m stands = 2 Passes 10-18m stands = 4 Passes
 20-36m stand = 10 Passes
 Plus 10 complimentary event tickets for your clients, sponsors and partners to attend the show

PADDOCK SPACE FROM £895

We have access to ALL of the paddock and Wing pit garages that will be utilised by Racing Clubs, Championships, Independent race teams, track day organisers and manufacturers.

6x8m Paddock/Quater Garage Space	£895
Includes 1 car on track each day, plus space for awning and transporter/camper. 4 exhibitor passes and 10 client/guest tickets	
6x16m Paddock Space	£1,695
Includes 2 cars on track each day, plus space for awning and transporter/camper. 6 exhibitor passes and 15 client/guest tickets	
6x20m Private Wing Pit Garage	£2,595
Includes 4 cars on track each day, plus space directly behind your private garage for evening hospitality and truck/transporter/camper. 8 exhibitor passes and 20 client/guest tickets	

CONTACT US:

WEB: WWW.MOTORSPORTDAYS.LIVE
TEL: +44(0)1732 642755
EMAIL: CONTACT@MOTORSPORTDAYS.COM



Exclusive ticket registration for drivers, teams and the trade is now available, all pre-registered tickets include 2-day access to the live paddock and garages, exhibition halls, Engineering + Technology Show and educational workshops plus event publications, test drives and on-track experiences. This is strictly a trade and industry event and no children under the age of 12 can attend the show, junior drivers between the ages of 12-16 must be accompanied by an adult ticket holder. All information correct at time of going to print 03/12/2019. Terms & conditions apply. MotorsportDays LIVE is produced by BWR Media Ltd.

MAIN ENTRANCE FROM HOTEL

